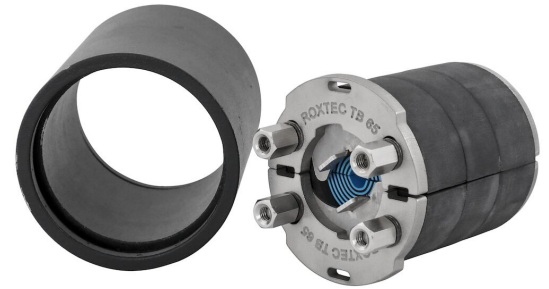




Roxtec TB afdichting met SL TB bus

Ronde afdichting voor een enkele kabel of leiding in stalen tankwandconstructies.

De Roxtec TB (tank boundary, tankwand) met SL TB is een ronde afdichting met een stalen bus voor een enkele kabel of leiding. De invoerafdichting bestaat uit twee helften met afpelbare rubberen lamellen, waardoor de afdichting kan worden aangepast aan kabels en leidingen van verschillende diameters. De bevestigingsplaatjes zorgen voor een mechanische verankering in de bus. De SL TB bus wordt op de constructie gelast.



- Snel en eenvoudig te installeren
- Aan te passen aan kabels en leidingen van verschillende diameters

Producteigenschappen



Brandvertragend



Waterdicht



Gasdicht

Installatiestructuur



Metaal

Montagetype



Lassen

Specificaties en certificaten

Brand

- A-KLASSE volgens IMO 2010 FTP-code

Dichtheid

- Gas: 2 bar (calamiteitendruk) / 1,2 bar (tankwanden)
- Water: 11 bar (calamiteitendruk) / 6,6 bar (tankwanden)

Gegevens van afdichtcomponenten

Afdichtcomponenten



vetstick



TB set

Ga naar [roxtec.com](https://www.roxtec.com) voor uitgebreide informatie.



Vooraf geconfigureerde doorvoersets

mm/kg



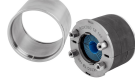
TB 65 KIT AISI316
WOC/PRIMED



TB 65 KIT AISI316
WOC/AISI316



TB 105 KIT AISI316
WOC/PRIMED



TB 105 KIT AISI316
WOC/AISI316

Titel	Configuratie	Afmetingen opening Ø	Gewicht	Art. nr.
TB 65 KIT AISI316 WOC/PRIMED	1x (8.0-30.0)	80 - 82	1.6	184905
TB 65 KIT AISI316 WOC/AISI316	1x (8.0-30.0)	80 - 82	1.6	196482
TB 105 KIT AISI316 WOC/PRIMED	1x (24.0-54.0)	120 - 122	2.8	200102
TB 105 KIT AISI316 WOC/AISI316	1x (24.0-54.0)	120 - 122	2.9	200103

The product information provided by Roxtec does not release the purchaser of the Roxtec system, or part thereof, from the obligation to independently determine the suitability of the products for the intended process, installation and/or use.

Roxtec gives no guarantee for the Roxtec system or any part thereof and assumes no liability for any loss or damage whatsoever, whether direct, indirect, consequential, loss of profit or otherwise, occurred or caused by the Roxtec systems or installations containing components not manufactured by an authorized manufacturer and/or occurred or caused by the use of the Roxtec system in a manner or for an application other than for which the Roxtec system was designed or intended.

Roxtec expressly excludes any implied warranties of merchantability and fitness for a particular purpose and all other express or implied representations and warranties provided by statute or common law. User determines suitability of the Roxtec system for intended use and assumes all risk and liability in connection therewith. In no event shall Roxtec be liable for indirect, consequential, punitive, special, exemplary or incidental damages or losses.

The Roxtec products are offered and sold in accordance with the conditions of the Roxtec General Terms of Sales. The latest version of the Roxtec General Terms of Sales can be downloaded from <https://www.roxtec.com/en/about-us/about-roxtec/general-terms-of-sales/>

We reserve the right to make changes to the product and technical information without further notice. Any errors in print or entry are no claims for indemnity. The content of this publication is the property of Roxtec International AB and is protected by copyright.

This document was generated on: 2024-04-30